

COVID-19

SCREENING PROCEDURES GUIDELINE

PURPOSE

This Guideline allows companies to establish a process for all projects to conduct daily COVID-19 temperature screening for all personnel entering a construction project. This is to include the entire workforce, deliveries and visitor entering a project. All procedures must comply with known legal requirements. This requirement will remain in place until it is determined to not be necessary.

1. Each site must create designated entry point(s) for the workforce to receive the temperature screens.
2. COVID-19 educational health & safety information must be posted at entry points to the project.
3. Project staff must participate in the process to assist with the orderly flow of people while maintaining all “social distancing” requirements. This may require paint marks on the ground, delineators and other means to control separation. This process is not to be conducted in small areas spaces where social distancing is not possible.

Interim Screening Process

1. In the event, there is not a thermal scan thermometer available on site to measure an employee’s temperature, site access will be determined by observation and verbal screening. The following three questions will be asked as the workforce enters the site.
 - a. Do you feel ill?
 - b. Have you been around anyone who was or is ill?
 - c. Are you experiencing shortness of breath and/or coughing?
2. Any positive (yes) responses will require individual to be recommended for further medical screening including the completion of an employee screening questionnaire.

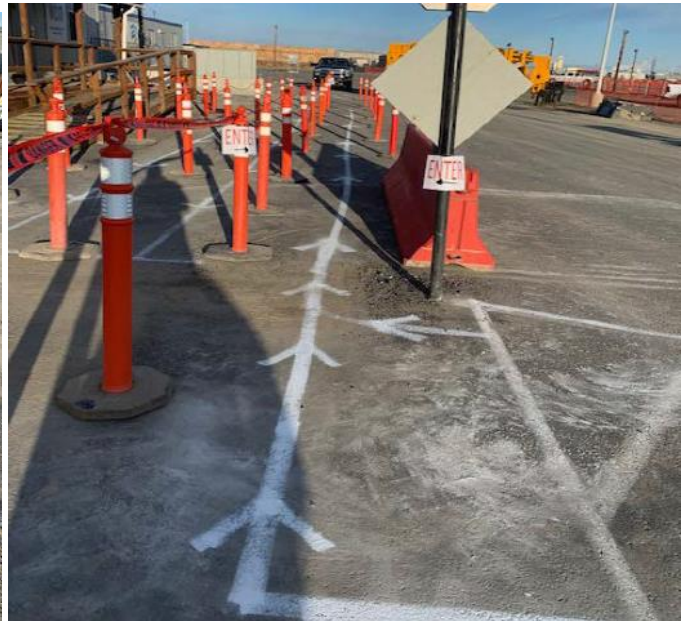
Non-Contact Screening Process

1. All employees will receive a “non-contact” temperature screen prior to being permitted access to the jobsite. People will also be observed for symptoms consistent with COVID-19.
2. If employee’s temperature is less than 38 degrees, and they DO NOT, exhibit symptoms consistent with the COVID-19 virus, employee may access the jobsite to proceed with work.
3. If an employee has a temperature of 38 degrees or greater, or DOES exhibit symptoms consistent with the virus, the employee will undergo further screening. This will require a contact temperature screen and the completion of a brief questionnaire. Individuals may be Isolated and or recommended for further medical evaluation based upon the findings.
4. The person assigned to conduct the screening will notify the Construction Manager and the relevant Safety Professional so that appropriate measures per Department of Health and NICD guidelines are implemented and the person safely exits the project.
5. All health and safety precautions must be taken by those conducting temperature screening to ensure their safety and the safety of those being screened. At a minimum:
 - a. Wear appropriate PPE (disposable type gloves, safety glasses, surgical type mask)
 - b. Follow all social distancing measures.
 - c. Ensure all equipment (e.g. thermometers) used must be cleaned in accordance with manufacturer’s instructions. Between every use.
 - d. If someone indicates a high temperature, please move them to an area away from others and ask them to protect with a surgical type face mask. The person conducting the screening must wear the same type of mask.

USE CONES/TAPE/BARRIERS TO DESIGNATE QUEUING LINES FOR POINTS OF ENTRY



USE PAINT OR OTHER MARKINGS FOR DIRECTIONAL AND SEPARATION LINES.



ESTABLISH AREA FOR FURTHER SCREENING

